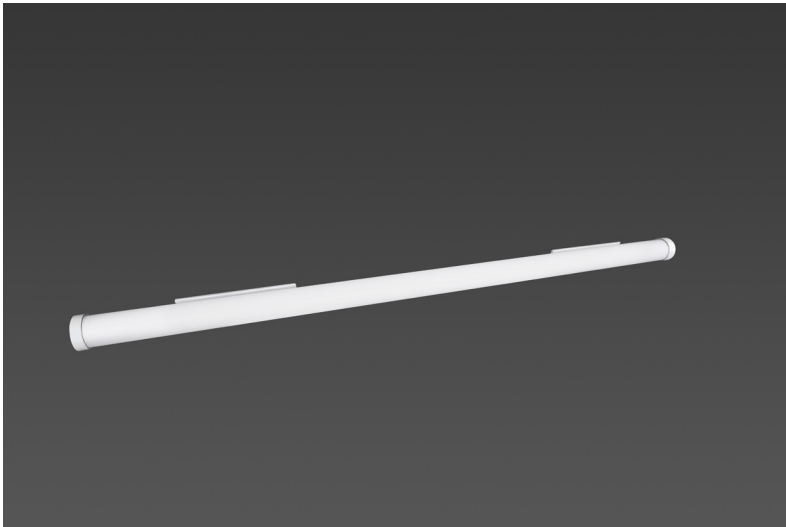


Project Name:	
Type:	
Qty:	

Halo Tube SM

Surface Mount



PRODUCT DESCRIPTION

The Halo Tube surface mount light has a unique linear style light with an LED light source illuminating its full light distribution. It is available in 5 sizes. The aluminum body construction comes with a milk diffuser.

FEATURES

- 5 sizes to choose from
- Full light emitting
- 90+ CRI
- 120-277 volt
- 0-10v dimming
- 70lm / watt
- 360° beam angle
- Damp Rated
- Suspension length: 60" (adjustable)

SPECIFICATIONS

	Length	Power
XS	1'	6w (420lm)
SM	2'	12w (840lm)
MD	3'	18w (1,260lm)
LG	4'	24w (1,680lm)
XL	5'	30w (2,100lm)

ORDERING INFORMATION

HTSM					
Fixture Type	Diameter	Size (length)	Color Temp.	Finish Color	Dimming
HTSM Halo Tube Surface Mount	2 2"	XS X-Small SM Small MD Medium LG Large XL X-Large	30K 3000 k 35K 3500 k 40K 4000 k 50K 5000 k	WH White	STD Standard Non-Dimming DIM 0-10v Dimming EM15 Emergency Battery Back Up (approx. 1050 lumens)
<i>For other options, consult factory</i>					